



# PORT OUTL

**Handbook**



# PORT OULU

Port of Oulu  
Poikkimaantie 16  
Fin-90400 Oulu  
Tel: +358 44 703 2753  
oulunsatama@ouluport.com  
ouluport.com

## CONTENTS

Ports Enable Green Transition	4
Introduction	6
Location Oulu	8
PORT OULU Smarter.	10
BusinessOulu – Driving Development in the North	12
MC Containers – Your Agile Terminal and Logistics Partner	14
KWH Logistics and Rauanheimo Offer Added Value to Customers by Investing in the Future	16
Junnikkala – Growing Strong	18
WALLENIOUS SOL – Enabling a Sustainable Future	20
NTG Air & Ocean Oy	21
Korsu Oy – The Strength of a Family-Owned Company	22
BB Logistics – An Efficient Logistics Partner	23
Herman Andersson Oy, A Versatile and Customer-Oriented Port Operator	24
Transport Kinnunen Oy	25
The Finnish Seamen's Mission in Port of Oulu	26



# PORTS ENABLE GREEN TRANSITION

The role of ports in the green transition is becoming very significant. Some ports already strongly support the construction of offshore wind farms, and some ports will become true centers of renewable energy production. Due to their central location and logistical connections, ports are very interesting investment opportunities for future green projects in the chemical industry. Also, the implementation of waste heat and various by-products among the industrial actors located around the ports brings much-needed synergy benefits.

The green transition also requires a new perspective on the EU's transport, environmental and energy goals. In the future, more cooperation and synergy are needed, especially between the transport and energy sectors. The European Ports Association ESPO plays a key role in influencing ports' ability to support the green transition in the best possible way.

The Port of Oulu is preparing for the upcoming change at speed. For a long time, we have been preparing the new areas formed in conjunction with deep channel dredging as the basis for industrial sites. In the first phase, we can offer an area of

about 40 hectares especially for the needs of the green transition chemical industry. Moreover, we are already planning the second phase, which also includes updating the entire master plan of the port. At that stage, the number of new industrial plots will at least double or triple.

Digitalisation is one of the most powerful forces of change that the port industry will face going forward. Digitalisation is a real opportunity to make things, raise awareness and enhance efficiency and most of all, increase responsibility. With digitalisation, we can get a better picture of operations as well as respond to changes more effectively and swiftly.

We encourage improvements and work together with our clients to develop different areas of operation. This is the model for development that we are determined to maintain and improve also in future.

As a customer of the Port of Oulu, you are more than welcome to discuss the development options for your investment needs or your supply chain towards a cleaner and more efficient fu-

ture with us. The responsibly built infrastructure of the Port of Oulu also offers your company the best possible starting point for a successful future. Let's be in touch and start building a clean future together!

This Port Handbook offers you a comprehensive picture of the various operators of the Port of Oulu. Hard-working professionals from various fields are ready to answer your questions and help with various everyday challenges. The Port of Oulu is a true general port that serves all industries and companies round the clock, all year round.



Marko Mykkänen  
Managing Director  
Port of Oulu Ltd



# INTRODUCTION

Find more information at [ouluport.com/services](https://ouluport.com/services)



**65°00' N, 025°24'**

## Location

The port of Oulu is located on the Gulf of Bothnia in northern Finland. Oulu is 610 km north of Helsinki.

## Authority

Port of Oulu Ltd – Oulun Satama Oy, Poikkimaantie 16, 90400 Oulu, Finland. [www.ouluport.com](https://www.ouluport.com)

## Approach

There are two approach channels, one with 10.0 meters depth and another with 12.5 meters depth: via Kemi or via the light-house.

## Accommodation

The Port covers a total land of 255 hectares and consists of three parts: Oritkari, Nuottasaari and Vihreäsaari.

## Oritkari

is for general cargo handling, with a total of quay length of 843 meters. It has facilities for handling ro-ro, sto-ro and container traffic. Oritkari has 13 warehouses: owned by the port authority and operators: Herman Andersson Ltd, MC Containers Ltd and Rauanheimo Ltd. Total capacity is 70,000 m<sup>2</sup>. The port also has 51,100 m<sup>2</sup> of open storage and a 500 m<sup>2</sup> bonded warehouse.

## Quays in Oritkari:

- North Quay has one berth of total length 170 meters with 10.0 meters depth alongside. It is used for loading reels, pallets, pulp, and containers. The quay has a ro-ro ramp.
- Main Quay has two berths of total length 343 meters with 9.0 meters depth alongside. It is used for loading reels, pallets, pulp and sawn timber and for loading/discharging containers and general cargo. The quay has a ro-ro ramp. There is a multipurpose 50-tonne crane equipped to handle containers and a 50-tonne ship-to-shore container crane with an outreach of 32 meters.
- West Quay has one berth of total length 330 meters with

12.5 meters depth alongside. It is used for mainly for loading sawn timber and it's capable of handling a wide variety of dry bulk cargoes.

## Nuottasaari

is a specialized quay for handling raw materials and products in connection with the pulp industry. Total quay length is 482 meters and depth alongside is between 6.4 meters and 10 meters. The Nuottasaari quay is used for loading pulp and for discharging chemicals and salt. There is also one chemical berth for discharging chemicals and other products.

## Vihreäsaari

is used for discharging oil products and dry bulks. There is one oil berth and one dry bulk berth. Total quay length is 222 meters with 10.0 meters depth alongside. There is 27,000 m<sup>2</sup> of open storage and 40,000 m<sup>3</sup> of warehousing for dry bulks.

## Airport

Oulu Airport at Oulunsalo, 15 km from the city center, has frequent flights to Helsinki.

## Anchorage

Good anchorage in the roadstead.

## Bunkers

All types of fuel supplied by NEOT Oy and Oy Teboil Ab.

## Cranes

Oritkari has a 50 tonne multipurpose crane equipped for container handling and a 50 tonne ship-to-shore container crane.

## Emergency

Call number 112.

## Hospital

Oulu University Hospital is close to the port.

## Largest vessel

Maximum of 65,000 dwt, 230 meters long and 12.5 meters draught.

## Lloyd's agent

Herman Andersson Ltd, Poikkimaantie 12, FIN-90400 Oulu, (P.O. Box 37, FIN-90401 Oulu)  
Tel: +358 8 3150 100 Fax: +358 8 371 743

## Pilotage

Pilotage is provided by Finnpiilot Pilotage Ltd and is compulsory for all foreign vessels.  
Marjaniemi Pilot Station, tel: +358 (0) 400 907 979  
Fax: +358 (0) 29 52 53012

## Radio information

The port operates on VHF Channels 12.

## Rail links

The port is linked to the national rail network. Oulu railway station is 5 km from the port.

## Road links

Excellent local and national road infrastructure. The north-south E75 highway is 1 km from the port, providing ready access to northern destinations and to Helsinki and the south. The whole of north-east Finland can be reached by truck within one day.

## Ro-ro facilities

Two berths of 30-meters width with depths alongside of 9.0 meters and 10.0 meters.

## Seamen's mission

There is an international seamen's mission in Oritkari with leisure facilities, shop, telephone, post box, free Wi-Fi, etc. The mission is open weekdays from 6pm to 10pm and during the day if required. Email: [oulu@merimieskirkko.fi](mailto:oulu@merimieskirkko.fi)

## Ship repair

Machine work-shop, ship repair and welding services are provided.  
Sah-ko Oy, Alasintie 1, 90400 Oulu. Tel: +358 8 882 6888

## Repair and maintenance services for containers

Oulun Konttivuokraus Oy / MC Containers, Poikkimaantie 4, 90400 Oulu. Tel: +358 400 890 732, +358 8 41 5416 05, [info@konttivuokraus.fi](mailto:info@konttivuokraus.fi)

## Storage

A total of 62,400 m<sup>2</sup> of warehousing plus a 500 square meter bonded warehouse are available in the Oritkari. Vihreäsaari has 40,000 m<sup>3</sup> of covered storage.

## Tides

There is no tidal variation in the Gulf of Bothnia.

## Towage

The icebreaking tug 'Tuura' is available from R-Towing Oy.  
Tel: +358 400 256 517

## Waste

Notification of ship-generated waste and cargo must be submitted to Port Control no later than 24 hours before ship's arrival at Port, or immediately upon departure from the previous port of call if travel time is less than 24 hours.

## Weather

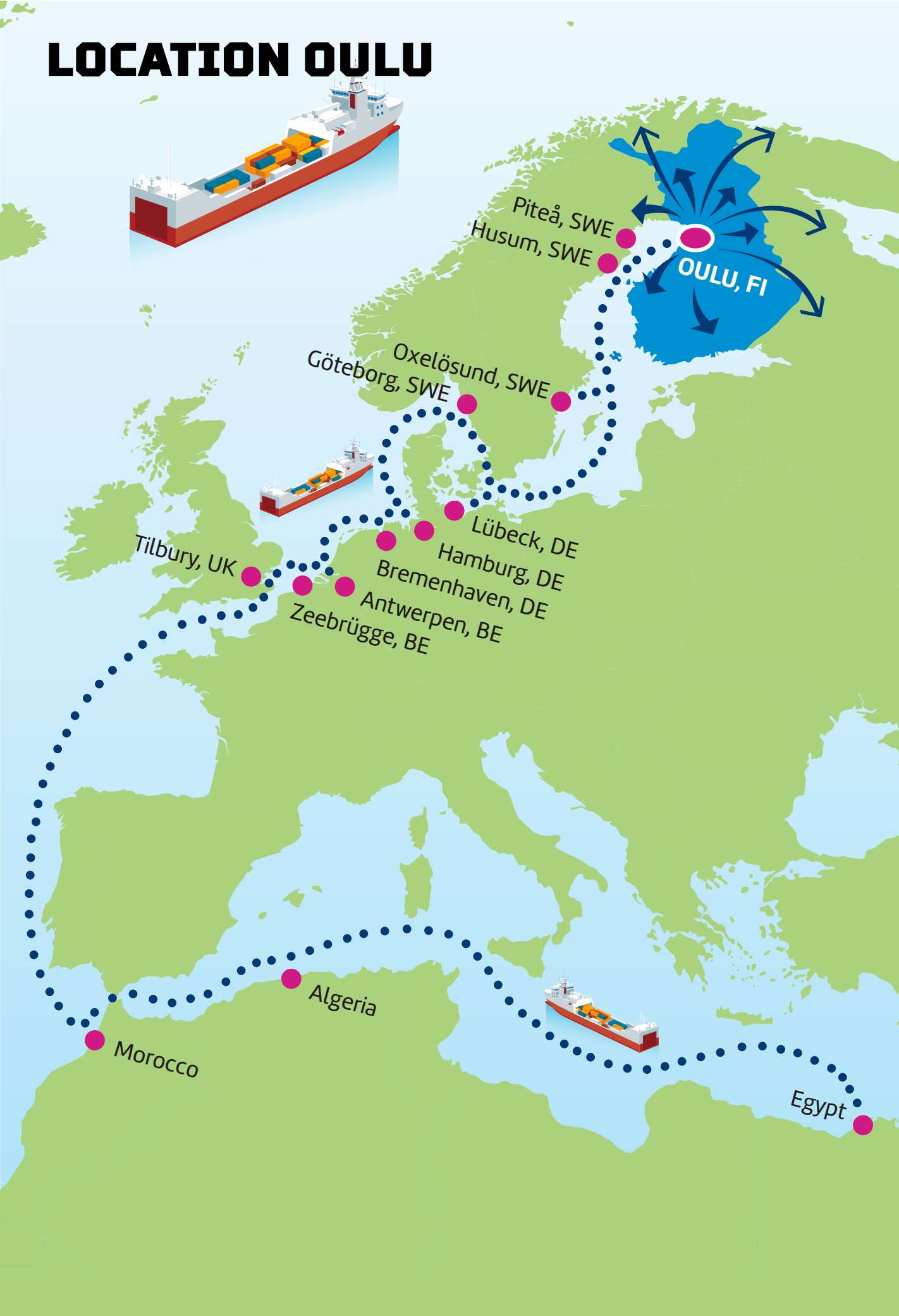
The port is open all year round. Icebreakers are used to keep approach channels free between mid-December and end March/early April.

## Working hours

Stevedores work Monday to Friday, 06am to 11pm and Saturdays 06am to 3pm. Cranes and port services are available 24 hours a day.



# LOCATION OULU



## Oritkari Harbour

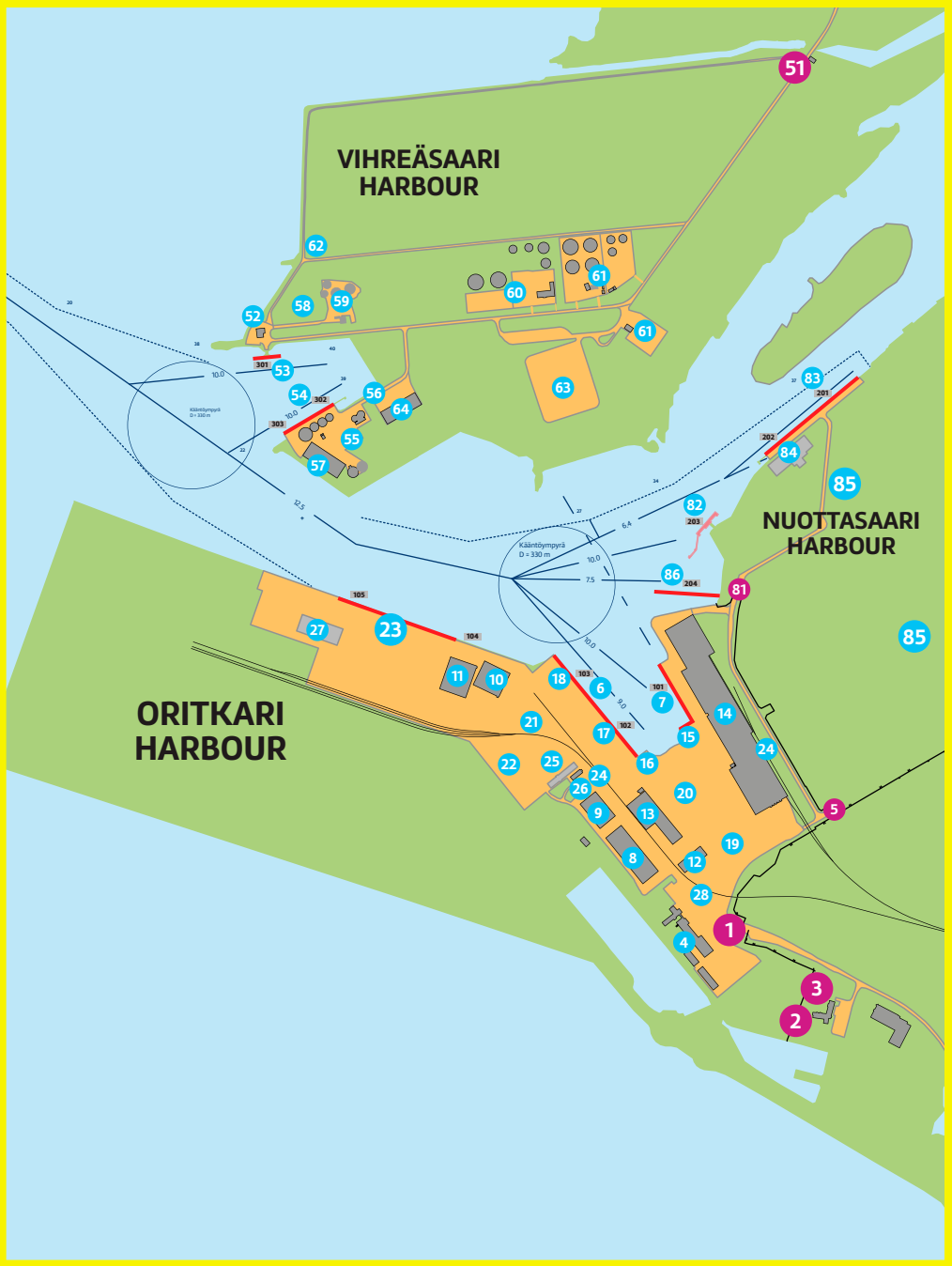
1. Main gate, access control
2. Oulu Port office
3. Customs
4. Herman Andersson Oy
5. Gate (Stora Enso)
6. Main quay, draught 9 m, (102, 103)
7. North quay, draught 10 m (101)
8. Warehouse 10
9. Warehouse 11
10. Warehouse 12
11. Warehouse 13
12. Warehouse 4
13. Warehouses 2-3, bounded warehouse, warm container warehouse
14. Warehouses 5-8
15. Loading ramp, RoRo ramp
16. RoRo ramp
17. Ship to shore container crane, 50 t
18. Multipurpose grane, 50 t
19. Container field
20. SECU container field
21. Container field for hazardous goods
22. Container field
23. Western quay, draught 12.5 m, (104, 105)
24. Railway yard
25. Seamen's Mission / Servicehouse
26. MC Containers
27. Rauanheimo Oy, Warehouse 17
28. Truck parking lot

## Vihreäsaari Harbour

51. Vihreäsaari gate, access control
51. Service house
51. Oil jetty, draught 10 m, (301)
51. Bulk quay, draught 10 m, (302, 303)
51. BB Logistics Oy, office
51. Finnsementti Oy
51. BB Logistics Oy, warehouse
51. EASTMAN Oy
51. Wibax Tank Oy
51. NEOT Oy
51. Oy Teboil Ab
51. Windmills
51. Oulu Energia storage field
51. BB Logistics Oy, warehouse

## Nuottasaari Harbour

81. Gate to Nuottasaari harbour (Stora Enso)
81. Chemical jetty 2, draught 10 m, (203)
81. Main quay, draught 6.4 m, (201, 202)
81. Warehouse, talc
81. Stora Enso Oulu Mill
81. Chemical jetty 1, draught 7.5 m, (204)







# PORT OULU SMARTER.

The Finnish city of Oulu is the logistics center of Northern Europe. The Port of Oulu is a junction for sea, rail, and road traffic, enabling efficient transportation to all of northern Scandinavia and to Russia. A so-called multi-operator environment poses a unique challenge for the port that handles three types of traffic. Operators vary from stevedores, pilots and icebreakers to waste management and maintenance as well as the Finnish Customs and other authorities. Building advanced and reliable digital infrastructure is the key to all operators to work seamlessly together, efficiently and sustainably.

## PRIVATE LTE

Local network solution in Oulu utilizes the 2.6GHz broadband spectrum allocated to the port by Edzcom and is based on the Nokia digital automation platform solution. The network investment enables innovative, modern, and secure digital smart port services for customers and partners alike. Cranes, lifts, and other stevedoring fleet must be reliably connected to receive and transmit data during cargo operations. The next step is to update the network for 5G connectivity for IoT and, for example, drones.

## PORT OULU Smarter. –app

Port of Oulu is developing its own mobile application together with Huld.

PORT OULU Smarter. app is a daily tool for port operators and visitors in the port area. With the app you can check arriving and departing vessels as well as the ones at berth, request for access to the port area, report observations and access information about the area. There are also features for port operators, for example crane orders and unloading reporting.

*You can download the PORT OULU Smarter. –app from application store of your phone!*

## GISGRO

GISGRO's digital tools are supporting port operations and asset management, with better communication between all the port's stakeholders. The work has begun with digitizing the port's asset information and adding the integration to create a complete and real-time situation map of the port.

The real-time digital situational picture of the Port of Oulu makes extensive use of both local and visiting transport and operational actors. In addition to area supervision and traffic control, the data generated is used in area planning and optimisation of storage fields and berths.

More information: [gisgro.com](https://gisgro.com)

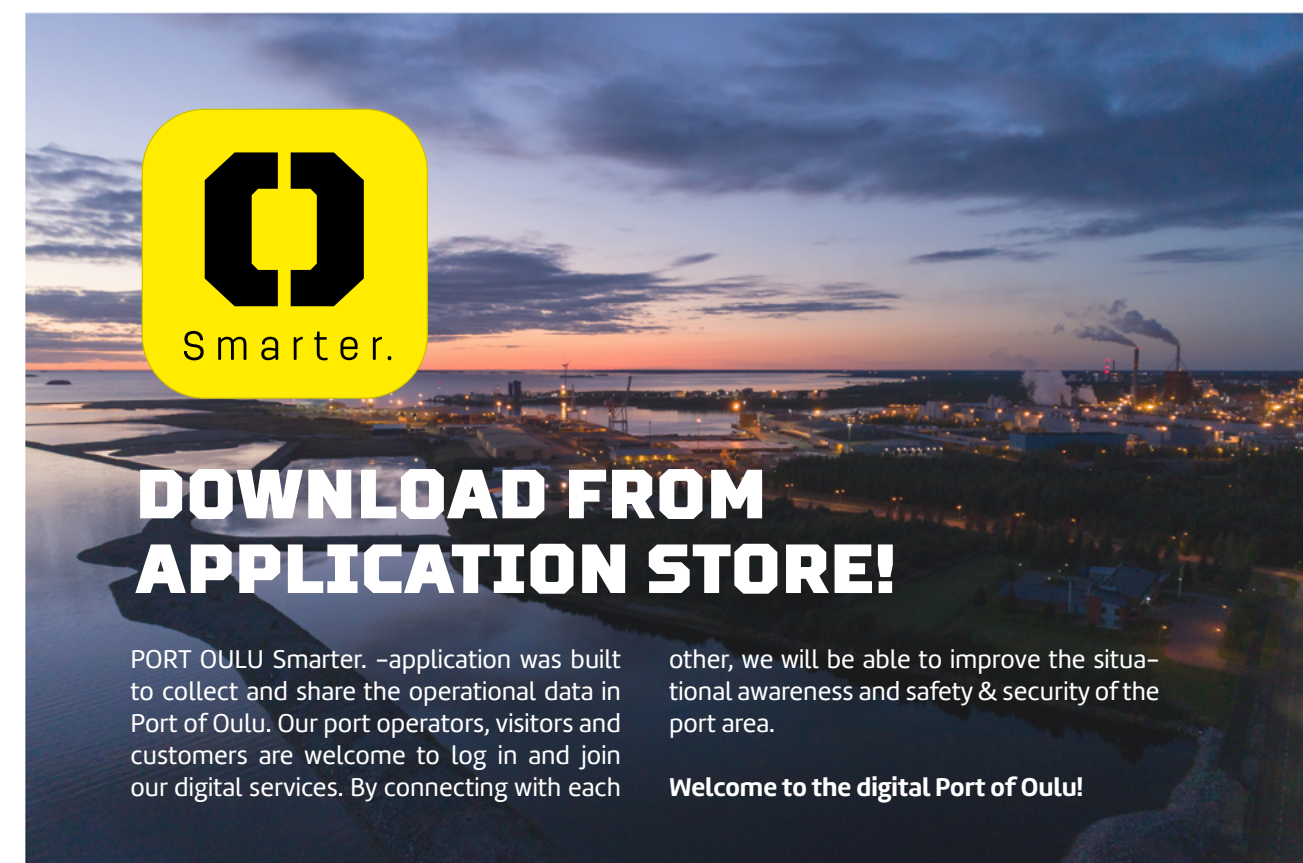
## Envare ENSIO

We aim to increase the responsibility of our business and know exactly the emissions caused by the port's operations. We are working hard to reduce our carbon footprint, be environmentally responsible and minimize emissions. Envare's emissions and energy flow monitoring software Ensio provides comprehensive, easy and fast access to emissions-related information and the needs of stakeholders. Energy efficiency and emission reductions increase environmental responsibility and support business.

With digital development work, the Port of Oulu gets ready to welcome autonomous modes transport by sea, rail and road in the future.

More information: [www.envare.fi/ensio](https://www.envare.fi/ensio)

More information on the PORT OULU Smarter. digital development: [www ouluport.com](https://www ouluport.com)



PORT OULU Smarter. –application was built to collect and share the operational data in Port of Oulu. Our port operators, visitors and customers are welcome to log in and join our digital services. By connecting with each

other, we will be able to improve the situational awareness and safety & security of the port area.

**Welcome to the digital Port of Oulu!**





# Driving Development in the North

With its 250,000 inhabitants, Oulu is the fastest growing region in the Nordics and an international business city full of opportunities. Oulu is also an excellent portal for the increasing Nordic investments. The strong and diverse hi-tech industrial base is supported by nearly 20,000 experts in the business sectors of ICT, life science, and cleantech. Oulu is also an international centre for research, development, innovation, and education with 25,000 students at two universities.

The collaboration between companies, the public sector, and the universities is intense, and the city bustles with innovations and opportunities. Oulu is an efficient gateway to the entire northern Scandinavia – an area that will be the driver for substantial development and sustainable growth within the next decade. Hundreds of billions of euros will be invested in the development of Arctic Europe – northern Finland, Sweden, and Norway. This will provide a long-term boost for the entire northern economy.

The region's logistic service network and transport system can serve the versatile needs of modern business. We have excellent connections and diversified logistics services which benefit the business in the north and economy on a larger scale, too.

## Beyond hi-tech

The emphasis in northern Finland is especially on sustainable energy, natural resources, and logistics. The versatile ICT expertise in the region provides useful tools for developing cleaner industries. Oulu's specific areas of expertise include diversified energy production, smart energy solutions, emission control systems, and resource efficiency. Products from Oulu are used all over the world: for purifying exhaust fumes, cleaning wastewaters, implementing smart lighting solutions, reducing greenhouse gas emissions, and generating green energy.



## Oulu boosts your business:

- ✓ Frontline know-how in digitalisation
- ✓ More than 50 years of expertise in wireless technology
- ✓ Innovation platforms and living labs
- ✓ Oulu Innovation Alliance brings together research institutions, businesses and public sector organizations
- ✓ Hot investment areas: 5G/6G development, IoT, AR/VR, AI, health solutions, printed intelligence, gaming, and cleantech
- ✓ Vibrant city with well-educated, young people

BUSINESSOULU, an agency owned by the City of Oulu, is the driver of business and industries in Oulu region with the goal of creating new jobs. The collaboration between companies, public sector and universities is intense, so the city bustles with innovations and opportunities.

## More information:

Jyrki Kempainen  
Key Account Director, Trade & Services, Travel and Logistics  
+358 44 499 3296  
jyrki.kempainen@businessoulu.com







# Your Agile Terminal and Logistics Partner

We're on a mission to make our customers' import and export endeavors as simple and hassle-free as possible.

Mattson Stevedoring is an agile service provider that offers customized logistics and terminal services for our general, bulk and special cargo customers. Handling a multitude of import and export projects for the past 30 years has given us vast experience and a strong network in Europe.

For all import and export projects in Finland, we are your one-stop partner. With our own terminals, warehouses and a dedicated crew, we are able to carry out even the most difficult logistics projects.

## MC Containers Group

- ✓ Founded in 2004
- ✓ Your One-Stop Partner for Containers and Logistics
- ✓ Mattson Containers GmbH (Germany and International)
- ✓ Mattson Containers Ab (Sweden and Scandinavia)
- ✓ Konttivuokraus Oy (Finland)
- ✓ Oy Mattson Stevedoring Ab

[www.mccontainers.com](http://www.mccontainers.com)  
[info@mccontainers.com](mailto:info@mccontainers.com)

## Forwarding, Ship Agency and Transport Services

Teaming up with us on your cargo projects, you get personalized service and enjoy a successful outcome every time. Our forwarding services range all the way from expert consultation to concrete tasks such as filling export clearances and import declarations on behalf of our customers. You can either choose specific parts of our flexible service bundle, or let us handle everything from start to finish.

We thrive in demanding import and export projects where we get to harness the full potential and competence of our team and global partner network.

## Terminal Services and Warehousing

Our depot and terminal inside Port of Oulu offer an unmatched terminal service bundle for import and export companies operating in Finland. Our agile services in Oulu include loading/unloading of both empty and full containers, stuffing, as well as container repair, maintenance and washing.

When it comes to warehousing, both the Oulu terminal and the Vihti warehouse in southern Finland ensure you a great variety of long and short-term storage opportunities for your bulk, pallet and container cargo. Both locations boast a spacious asphalted storage area and warm hall space for year-round storage of your goods.

## Cargo Handling and Consultation

When you want to maximize transport security, leave the packing and loading of cargo to our experienced team in Oulu and

Part of MC Containers Group

Vihti. We have successfully handled general, bulk and special cargo projects from start to finish for our European customers. Based on our experience, we don't believe in one-size-fits-all services, but instead approach every customer case with attention to details and suggest a functional game plan.

If you so prefer, we can also take a consulting role and provide you with the proper packing materials to ensure your cargo reaches its destination intact.

### Terminal Oulu

- ✓ Located 100 m from pier
- ✓ Cold and warm warehouse
- ✓ Reefer connections and repairs
- ✓ Container repairs and modifications
- ✓ Private depot ca 20,000 m<sup>2</sup>
- ✓ Full and empty container handling
- ✓ Special cargo handling

### Warehouse Vihti

- ✓ Cold and warm warehouse
- ✓ Private depot ca 20,000 m<sup>2</sup>
- ✓ Full and empty container handling
- ✓ Special cargo handling

## One-Way Service and Cabotage

When you need to move goods from one city or continent to another, our one-way service is a cost-efficient solution. Through the service, you get to rent a CSC container from any of our 80+ depots around the world and return it to a completely different depot afterwards.

We also offer cabotage containers to freight forwarders and shipping lines on various routes. We operate from all major container ports to even smaller ports, regular routes being between Europe and the Nordics.

## Container Trading

We are your one-stop partner for all new and used shipping and reefer containers. Available for lease and for purchase in our 80+ depots worldwide.

## Repairs, Spare Parts and Packing Materials

We carry out repairs for shipping containers and reefers. Our service is trusted by multiple shipping lines and we are the only official Thermo King and Carrier repair centre in Finland.

We supply container spare parts and also packing materials for cargo protection. Our products range from dunnage bags to lashing materials.

**MC CONTAINERS**  
 wherever you are





heimo, takes care of the sawmill's operations and transports to the port.

Junnikkala's production facility at Laanila, Oulu, will be one of Finland's most modern sawmills. The role of Rauanheimo and KWH Logistics as a long-term logistics partner will be an important part of the entity. With the opening of the Oulu sawmill, the importance of the Port of Oulu as a sawn lumber center will grow significantly.

Rauanheimo and Adolf Lahti use the latest technology in their service operations. Electric forklifts will be purchased for the sawmill to process the products, and a Mantsinen 200 DER hybrid crane, working mainly on electricity, was purchased for the port.

Reducing the carbon footprint and taking the environment into account in all operations also supports the customers' responsibility goals. The Port of Oulu is involved in offering environmentally friendly solutions by electrifying the lumber dock.

### **Towards greener and more efficient tomorrow**

We are committed to offering our customers intelligent logistics solutions in an innovative, customer-specific and efficient way. In order to be able to fulfill our promise, building a sustainable future must also be taken into account. For us, comprehensive customer projects also means investing in the social, ecological and financial sustainability. Our desire is to develop responsible and ecologically sustainable methods of operations with our customers, and we are ready to invest in a greener future.

We are involved in several responsibility projects, where we strive to develop both our own operations and our society to be more responsible. For example, KWH Logistics and our subsidiaries Rauanheimo and Adolf Lahti are part of a project, where used heavy vehicles are converted to operate fully on electricity. The goal is a solution that combines zero emissions, occupational safety, and resource efficiency, which is achieved by extending the life cycle of the existing vehicles.

# **KWH Logistics and Rauanheimo Offer Added Value to Customers by Investing in the Future**

KWH Logistics is Finland's leading and fastest growing service provider in the logistics sector. We provide comprehensive, smart and efficient overall logistics services in three business areas: Port Logistics, Industrial Services and International transports. KWH Logistics is made up of several independent subsidiaries and is part of the family-owned KWH Group.

KWH Logistics is everywhere in Finland and always close to the customer – with the help of our comprehensive service network, we are always able to offer cost-effective, fast and customized logistics expertise. We develop our own and our customers' operations innovatively, responsibly and reliably.

## **Port operator Rauanheimo creates customer-oriented logistics solutions with a sustainable perspective**

We have always actively developed our operations and invested in future logistics solutions. For example, our subsidiary Rauanheimo has increased resources to develop operations to be safer, more environmentally friendly, and more efficient.

"Rauanheimo creates competitive logistics solutions that save customers time and costs. By outsourcing their logistics operations to us, customers can sleep well at night.", comments CEO

Tero Kosonen at Rauanheimo. "We are willing and able to invest into the newest sustainable technology and through that offer competitive advantage to our customers".

Close collaboration with customers allows Rauanheimo's dedicated team of professionals to develop tailored solutions that add genuine value to our customers' logistics operations. Rauanheimo is an excellent partner because by combining stevedoring, forwarding, and storage services as well as sea and land transport, the company enables efficient logistics chains that improve the customer's competitiveness.

## **New sawmill production facility to Port of Oulu**

At the end of 2022, **Junnikkala** organized a call for tenders for the logistics functions of the Oulu sawmill under construction. Based on the offer, Rauanheimo was chosen as the logistics partner with a multi-year contract. The contract includes operations at the sawmill, transports from the sawmill to the port and all port services in Oulu. **Adolf Lahti Yxpilä Oy Ab**, who belongs to the same KWH Logistics business group as Rauan-





# Junnikkala – Growing Strong

Junnikkala is one of the most modern companies in the world, when it comes to the mechanical wood processing industry. Our company is a bit like our raw material; strong and true, tempered by the North and aged with experience. For six decades already, the know-how has been passed on from one generation to the next, combined with courage, innovation and large-scale investments that have created a sustainable foundation for our operations now and in the future.

## First-class Raw Material

Thanks to the long and cold winters and short, bright summers in the Scandinavian Taiga of the European coniferous forest area in Northern Finland, the pine and spruce grow slow, but very strong. The conifer that Junnikkala is processing is probably one of the strongest coniferous materials in the world.

## For the Best of Human and Nature

The Junnikkala forest department ensures the quality and quantity of deliveries without interruptions and makes sure that the material procurement, supply and transportation are undertaken sustainably.

The forest is the future of our Earth – that is why in procuring the wood we respect the forest seller, the raw material and the Finnish forest nature.

Junnikkala purchases the whole tree and processes it so that as much of the wood as possible is obtained and carbon sequestration is also maximized. The crowns of the tree are used to generate energy in the local heating plant of Junnikkala.

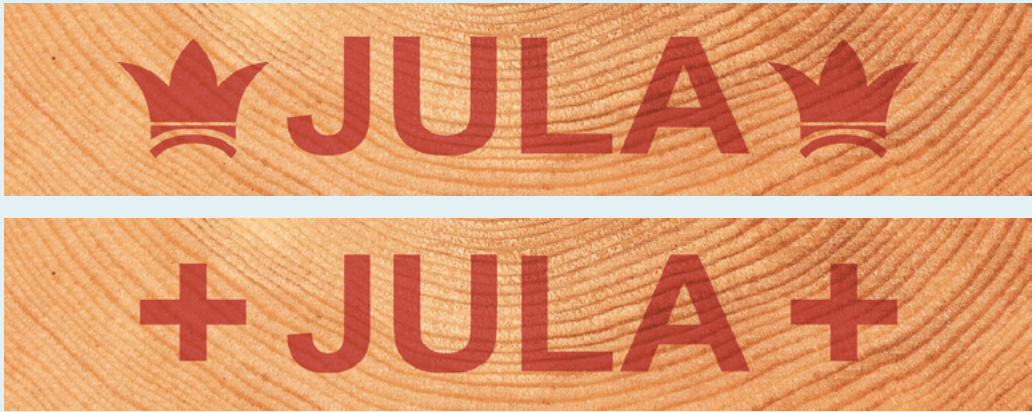
## Oulu Sawmill complex

Our new sawmill complex, to be built in Oulu in 2023, is the largest privately owned sawmill investment in Finland. Using state-of-the-art technology, it will more than double our production capacity, increasing it to 750,000 m³.

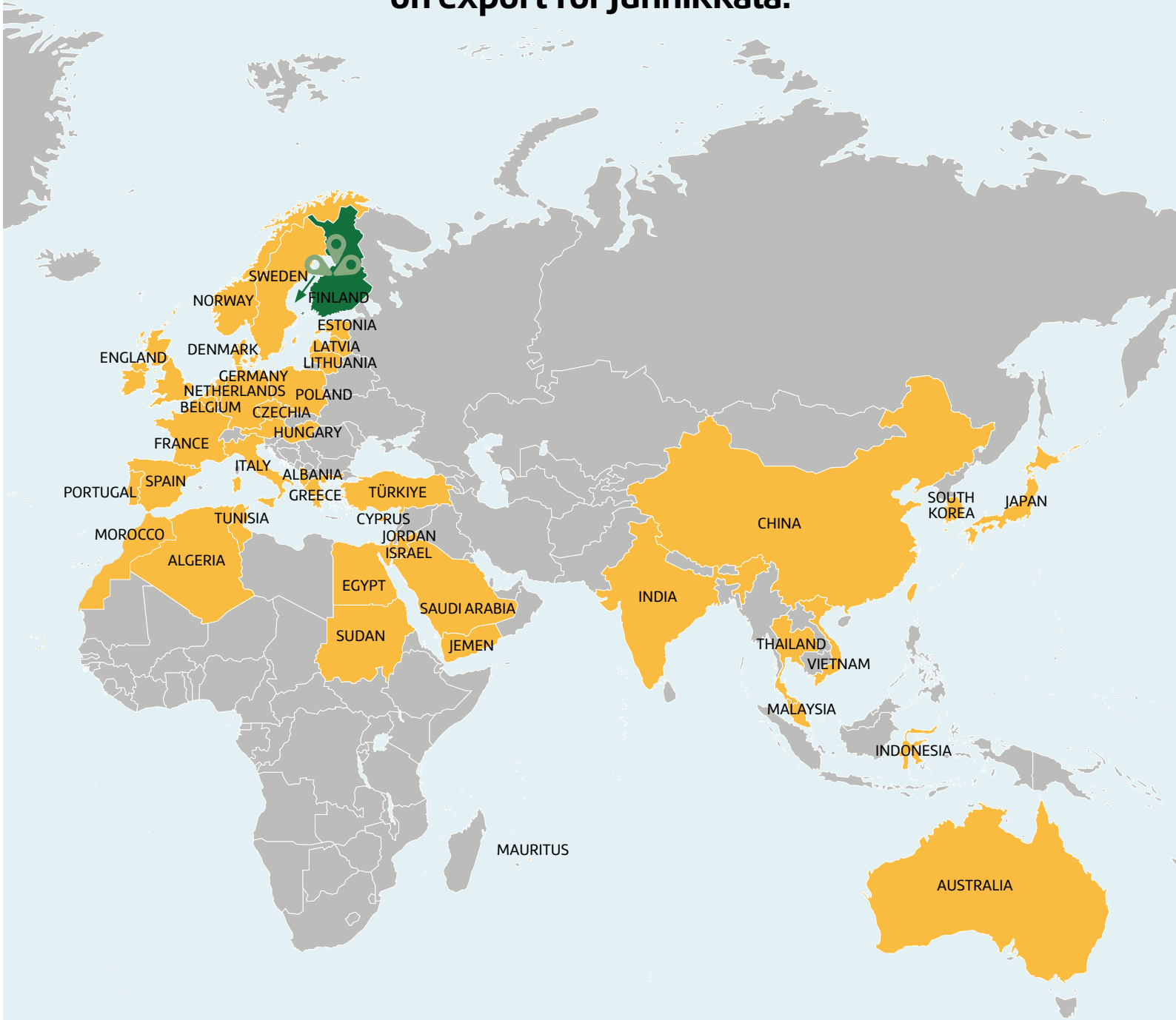
### In 2024:

- ✓ Annual sawn timber output 750,000 m³
- ✓ 75% Pine, 25% Spruce
- ✓ 70,000 m³ processed further in planing mill
- ✓ 40,000 m³ of mill painted products
- ✓ Turnover EUR 300M
- ✓ Share of export 60%
- ✓ Exporting to 40 countries

More information: [www.junnikkala.com](http://www.junnikkala.com)



A nearby harbour has a big impact on export for Junnikkala.







## Enabling a Sustainable Future

It's not often that a new Swedish shipping line sees the light of day, but in 2019 WALLENIUS SOL was launched with the ambition of creating a sustainable infrastructure between the Gulf of Bothnia, the northern Baltic Sea, and the European continent. The idea was to offer the Nordic forest industry regular and reliable transport of wood and paper goods southward. Today, several major forest and industrial customers have chosen WALLENIUS SOL and its efficient liner service both north and southbound.

"This is a system adapted for the European market, which mainly ships as RoRo, but which can also offer a feeder service with containers that connect northern Sweden and Finland with the whole world via Antwerp," says Jonas Wåhlin, CCO, WALLENIUS SOL. The demand for sustainable transport solutions to and from the Nordics is increasing faster than ever as a result of the green industrial revolution.

WALLENIUS SOL's core idea is to create a sustainable transport solution in the Gulf of Bothnia in close cooperation with customers, not least with customers who have the environment and climate at the top of their agenda. By both parties investing in the long term, the majority of the obstacles are removed to create the infrastructural flexibility that allows transport to increase. This makes it possible for individual companies to grow and develop in a region that is far away from customers and suppliers.

WALLENIUS SOL offers an eco-smart fleet with large, ice-rated multi-fuel vessels prepared for battery operation. Botnia Enabler and Baltic Enabler are considered the world's biggest ice-rated ConRo vessels. They are equipped with three inde-

pendent stern ramps and handles trailers, containers, industrial cargo and project cargo. They also specialize in high and heavy cargo that need to be lifted on board. WALLENIUS SOL vessels departure Port of Oulu twice a week on regular basis.

"We responded to customers' needs and have worked proactively on their behalf to build an infrastructure that is sustainable over time – financially, environmentally, and climate-wise, says Jonas Wåhlin.

### Our services:

- ✓ WALLENIUS SOL's vessels load in Port of Oulu twice a week and offer feeder, RoRo and break-bulk services.
- ✓ Destinations; Travemünde, Zeebrugge, Antwerpen and Tilbury.

### For more information:

Jonas Wåhlin  
Chief Commercial Officer,  
WALLENIUS SOL  
+46 (0)31-354 4024  
jonas.wahlin@wallenius-sol.com  
[wallenius-sol.com](http://wallenius-sol.com)

**WALLENIUS SOL®**



## NTG Air & Ocean Oy

NTG Air & Ocean Oy is part of public listed NTG Nordic Transport Group A/S together with over 80 transport and forwarding companies worldwide – with more still joining. The members in the group co-operate through partnership agreements, giving each company extensive opportunities for driving and developing their businesses.

Our business at Air & Ocean Oy, established in 2007, relies on the high quality of our services & business transparency. The key to our success are satisfied customers, who can count on receiving high-quality project logistics services and solutions. We are an ISO9001 & ISO14001 certified company. Our environmental management system follows a standard that ensures that we comply with the set environmental regulations. NTG Air & Ocean Oy belongs to Bisnode's good AA credit rating and Dun & Bradstreet's lowest risk class 1.

Not all transport is suited for standard solutions. Sometimes alternatives are needed, and this is where we can help you. We are good at finding untraditional solutions and that is exactly what is needed in project transport.

NTG Air & Ocean Oy – Finland has many years of experience in project transport, and we use that experience and knowledge every day when we provide service to our customers around the globe.

More information: [www.ntg.com](http://www.ntg.com)

### Key contact details:

Jukka Limingoja, Sales Director  
tel. +358 40586 0137  
jukka.limingoja@ntgairocean.com

### We can offer solution and services:

- ✓ Airfreight
- ✓ Ocean freight
- ✓ European Multimodal Services
- ✓ Container & Trailer haulage
- ✓ Project Logistics
- ✓ Roro
- ✓ Break bulk
- ✓ Cross trade/3rd party logistics
- ✓ Export/import customs documentation

NTG Air & Ocean  
Nordic Transport Group







## Korsu Oy – The Strength of a Family-Owned Company

Korsu Oy is a family-owned company with a history dating back one hundred years, to 1923. It is currently managed by the fourth generation of the family. Korsu's fleet consists of almost sixty vehicle combinations operating in Finland, Sweden and Norway. The company employs almost one hundred professionals, who are responsible for transport tasks, vehicle servicing and traffic operations.

Korsu's tank fleet transports various dry materials, such as cement, limestone powder, sand, and biofuels. Korsu serves exports and imports to and from ports around the Bothnian Bay with a wide range of container transports which include trucks equipped with compressors, tipping trailers with rotary valves and sideloader services, in addition to regular container transports. Korsu's services also include transporting oversized and exceptionally heavy loads, as well as bulk transports with swap body trailers. As a result, Korsu can meet a very wide range of different transport needs and is able to adapt quickly to new or changing customer needs.

Korsu's aim is to satisfy the customer without compromising on quality or scheduling. In addition, our operations are guided by the continuous management of occupational safety and cost-efficiency, which safeguards our profitable operational continuity. Korsu is known as a determined, flexible, and efficient operator.

Korsu's management system is certified in accordance with ISO 9001:2015 and ISO 14001:2015 by LRQA Limited.

More information: [www.korsu.fi](http://www.korsu.fi)

### Korsu Oy

- ✓ Powder transports
- ✓ Container transports
- ✓ Bulk transports
- ✓ Special transports

# Korsu



## An Efficient Logistics Partner

BB Logistics operates in five Finnish ports, providing a diverse range of port handling, storage and transport services to customers such as wind energy, bioenergy producers and users, as well as industries including food, animal feed, pulp and paper, construction, mining and metal. As we operate in several locations across the coast, we will find you the best logistical solution.

All of our terminals have the possibility to customize storage options based on the customer's needs.

Almost all terminals have both outdoor and indoor storage space. We operate as part of the Euroports company.

At all terminals the warehouses are located next to the quays and at many terminals train tracks are also close to the warehouses.

BB Logistics' operations are guided by the certificates ISO 9001, ISO 14001, ISO 45001 and EFISC-GTP. With successful work and setting goals, we ensure a safe and environmentally friendly workplace for employees, customers and partners.

For us, safety means a safe working environment to our employees in all conditions. We are a reliable and desired operator for our partners now and in the future.

### BB Logistics Oy

Port of Oulu  
Vihreäsaari – Oritkari  
Antti Vihavainen  
Area Manager, Northern Finland  
+358408613412

More information:  
[www.bblogistics.fi](http://www.bblogistics.fi)







## Herman Andersson Oy, A Versatile and Customer-Oriented Port Operator

With an experienced team of 100 professionals and a tradition of port operations since 1902, Herman Andersson Oy is the main provider of forwarding and stevedoring operations in Port of Oulu.

The company offers a wide range of terminal services from warehousing to stuffing and stripping of all kinds of cargo units, and to loading and unloading of trucks and railway cars.

In stevedoring Herman Andersson Oy handles ISO containers, SECU boxes, cassettes, mafis and trailers as well as break bulk and bulk cargos with its fleet of 60 machines.

With its partners, the company also offers a wide range of forwarding services, for example sawn timber on cassettes to several destinations on the continent and in the UK.

The company's terminal is open 24/7 all year round, which offers an excellent service to all shippers and haulers delivering cargo to/from port.

Herman Andersson Oy also offers 24/7 ship's agent service to owners and charterers.

More information: [www.hermanandersson.fi](http://www.hermanandersson.fi)



## Transport Kinnunen Oy

Transport Kinnunen is a family-owned company running in the third generation, founded in 1949 and based in Oulu, Capital of Northern Scandinavia. Kinnunen operates in Finland, Sweden, Norway and Central-Europe. Transport Kinnunen is part of a network whose competence, skills, seamless cooperation and unified practices ensure high productivity and a competitive edge for customers.

Kinnunen's environmentally friendly fleet offers solutions for varied transport needs from containers to highly challenging special transport projects. Services include wide range of container transports, which include sideloader services. Kinnunen's services also include ADR and bulk transports.

The company has the ability to adapt quickly to new or changing customer needs and requirements by expanding the fleet or modifying it even at a short notice. New high capacity trucks and real-time vehicle tracking system ensures that transportation can be carried out safely and cost-efficiently.

Quality, reliability, and determined and customer-oriented service have always been the company's guiding principles. These principles combined with reliable fleet and professional staff have ensured the business' success, continuity and profitability.

The company's social responsibility, safety standards and ethical operations are reflected in its HR policy, and long-term cooperation in various networks.

More information:  
[www.kuljetuskinnunen.fi](http://www.kuljetuskinnunen.fi)  
[sales@kuljetuskinnunen.fi](mailto:sales@kuljetuskinnunen.fi)  
+358 40 583 2243



- ✓ Container Transport
- ✓ Oversized Load Transport
- ✓ ADR Transport
- ✓ Dry cargo
- ✓ Sideloader Services

# TRANSPORT KINNUNEN





# The Finnish Seamen's Mission in Port of Oulu

The Finnish Seamen's Mission is a neutral non-profit association, whose mission is to be the church and meeting place for people on the move. In Finland you will find Finnish Seamen's Mission in Kemi-Tornio, Oulu, Kokkola, Rauma, Hamina-Kotka, Turku, and Vuosaari (Helsinki). Abroad you will find us in Athens, Brussels, Hamburg, London, and Rotterdam.

The Seamen's Mission is a living room where everyone is respected and is listened to individually. Essential to our activities is getting people together. Come as you are – no membership card or church affiliation will be requested. With us, you can feel at home and be yourself among other people.

Depending on the establishment, there are canteens, a coffee shop, billiards, Internet, transport and guide services, meeting premises, excursion activities, visits aboard, informational events and so on.

Each branch of the Finnish Seamen's Mission is a unique "living room". In Oulu there is a small canteen where you can buy refreshments, small necessities, and souvenirs. In addition, phone cards and free Wi-Fi are available.

## Ship visiting

Volunteers of the Seamen's Mission regularly visit seafarers on board the vessels at the Port of Oulu. Frequently they meet seafarers who have not been ashore for several months.

The main task of the ship visitors is to take time to find out what the seafarers' needs are.

In addition, they provide information – for example about the opening times of the Seamen's Mission, or answer questions concerning shore leave in Oulu.

On their visits they can also supply phone cards and help crew members to set up an internet connection. Connection to home is important.

If required, a chaplain will also come on board for prayer or to conduct a church service.

**Visiting address:** Oulu Port House, Poikkimaantie 16, 90400 Oulu

**Open:** Mon–Fri 17–21.00

**The Port Chaplain/Sailing Chaplain** Ms Mia Haapakorva,

**Tel:** +358 400 371 574

**E-mail:** oulu@merimieskirkko.fi

**More information:** [www.merimieskirkko.fi](http://www.merimieskirkko.fi)

## Our support includes:

- ✓ Visiting ships to check crew members are well
- ✓ Providing SIM cards to connect you with loved ones
- ✓ Transport when you're on land
- ✓ Help connecting you to other organizations, if needed
- ✓ Emergency support
- ✓ Seafarers' centers, where you can relax, connect to Wi-Fi, and have something to eat and drink
- ✓ Advocacy, if you need it.



# PORT OULU

Port of Oulu  
Poikkimaantie 16  
Fin-90400 Oulu  
Tel: +358 44 703 2753  
[oulunsatama@ouluport.com](mailto:oulunsatama@ouluport.com)  
[ouluport.com](http://ouluport.com)



**PORT  
OULU**